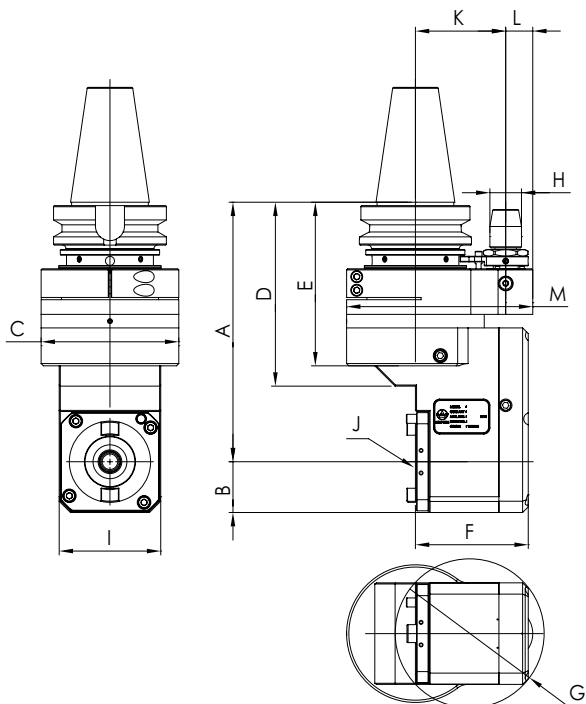


- 錐度 40 刀具接合介面，提供各種 BT40/SK40/CAT40 刀具之彈性應用，涵蓋大部分加工應用。
- 採用後縮設計，減少本體長度，降低工件干涉。
- 刀具加工支點靠近橫銑頭中心增加加工剛性。
- 拆刀、鎖刀扳手設計，方便拆鎖刀時固定橫向軸與施力。
- 自動刀庫換刀加工，量化生產必備工具。
- 環抱型定位塊設計，可 360 度旋轉調整加工角度，並加強鎖固力道及加工角度精確性。

內孔偏擺度	0.002 mm
材質	航太用鋁合金 / 合金鋼
轉速	最高 4000 RPM
扭力	最大 50 Nm
齒輪比	1 : 1
適用主軸	BT, SK(ISO), CAT
標準配件	鎖刀板、L 型扳手
出力軸轉向	正轉

- The output interface of Taper40 ensures wide-range application with various BT40/SK40/CAT40 Tool Holder.
- Offset design ensures compact body and largely eliminates interference.
- Offset design eliminates the protrusion of tools and enhances working rigidity.
- Special tool-locking design ensures easier tool engagement and release.
- Can be automatic tool changed. Increases productivity.
- Enclosed Positioning Pin: Cutting Direction can be adjusted from 0~360 degrees. It allows higher clamping torque and cutting direction could remain during the machining.

Run-out	0.002 mm
Material	Aerospace Alu. Alloy / Alloy Steel
R.P.M.	Max. 4000 RPM
Torque	Max. 50 Nm
Gear Ratio	1 : 1
Spindle Type	BT, SK(ISO), CAT
Standard Accessory	Tool-Locking Plate, L Type Wrench
Output Rotation	Same as Input Rotation



Unit : mm

Model No.	A	B	C	D	E	F	G	H	I	J	K	L	M	N.W. (KG)
AHM-BT50-D42.230	230	45	122	163	145	100	132	28	90	BT40/SK40/CAT40	80/85/110	24	165	14.8
AHM-SK50-D42.230	230	45	122	163	145	100	132	28	90	BT40/SK40/CAT40	80/85/110	24	165	14.8
AHM-CAT50-D42.230	230	45	122	163	145	100	132	28	90	BT40/SK40/CAT40	80/85/110	24	165	14.8